

An innovative approach creates new arenas for sport

Sweating the asset: Making sports facilities work better

Development Consultant Jakob Færch
Danish Foundation for Culture and Sports Facilities

Future calls for new solutions

- Innovative sports facility development
 - Case: Danish National Regatta Course
 - 'The Danish Model'
 - How we do it
- 4 challenges & innovative projects
- Recommendations for innovation

Mission

The mission of the Foundation is to develop, advise and support construction of sports, culture and leisure facilities with a strong focus on architecture and functionality.



Danish National Regatta Course



Events and training

- Training center canoe/kayak/rowing
- Masters Rowing World Champs 2016
- World Cup sprint canoe/kayak 2020
- World Championship sprint canoe/kayak 2021

Modernisation project

- 120 mio. kroner/€16 mio.



TEAM DANMARK



LOKALE
ANLÆGS
FONDEN

Danish National Regatta Course



“The Danish Model”

Sports Facility Development

- Critical view on need and demands
- Human scale
- Support news trends and mass participation
- Multiple functions
- Build on democratic processes involving usergroups
- Respect for environment
- Solutions to 'problems' & challenges in Society
- Achitects, movement experts and users



IOC IAKS AWARD 2017



Bronze

Activity Landscape Harbøre

Harbøre, Denmark

Architects:

JAJA Architects
København, Denmark

Owner:

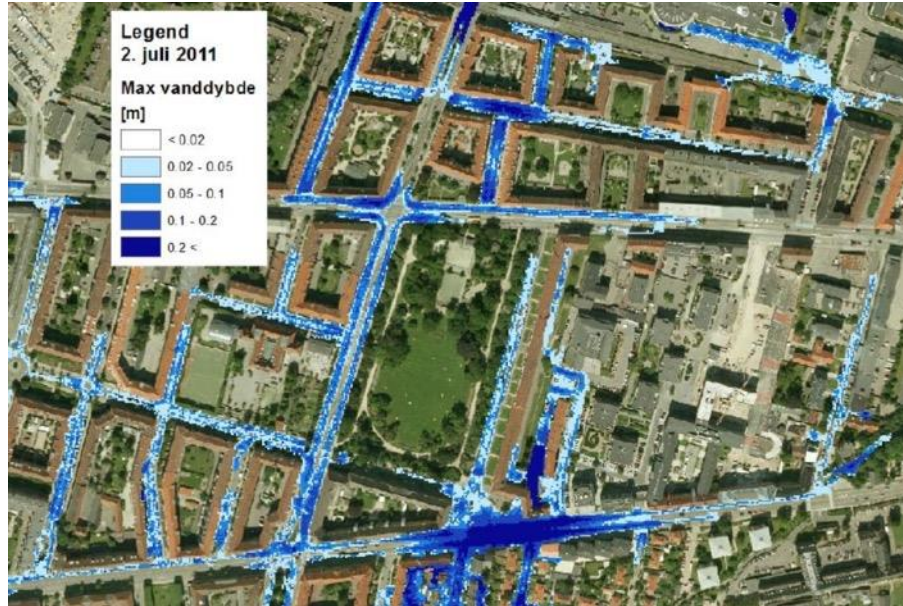
Harbøre Centret
Harbøre, Denmark



CASES: Working with challenges...

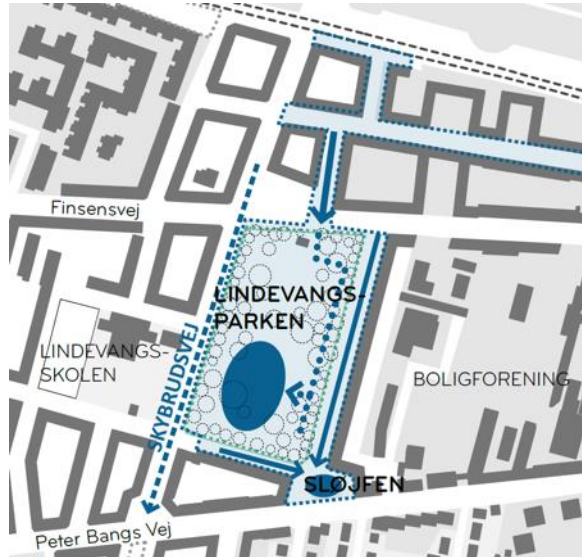
- **RAIN WATER & FLOODS /**
- **URBANISATION /**
- **RISING SEA LEVELS & STORM WATER /**
- **SECURE DRINKING WATER /**

Rain Water & flooding

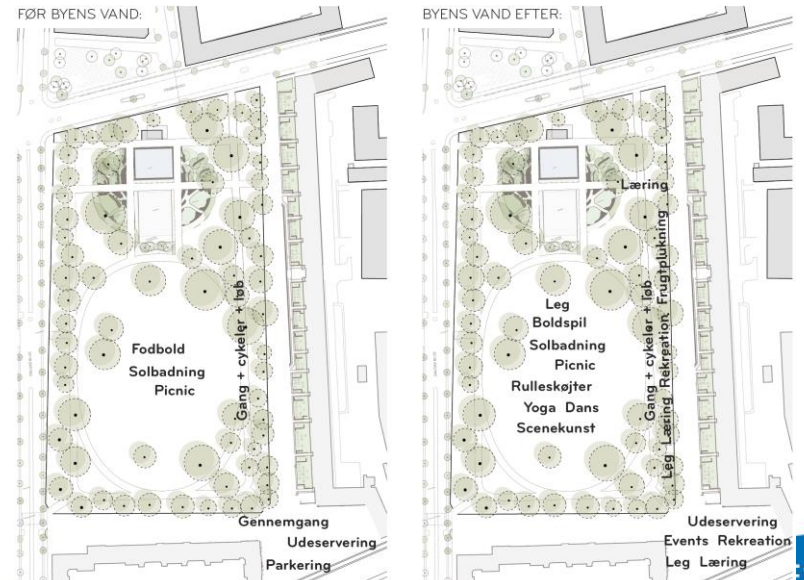


Lindevangsparken

Rain Water Storage



Recreation Facilities



Lindevangsparken

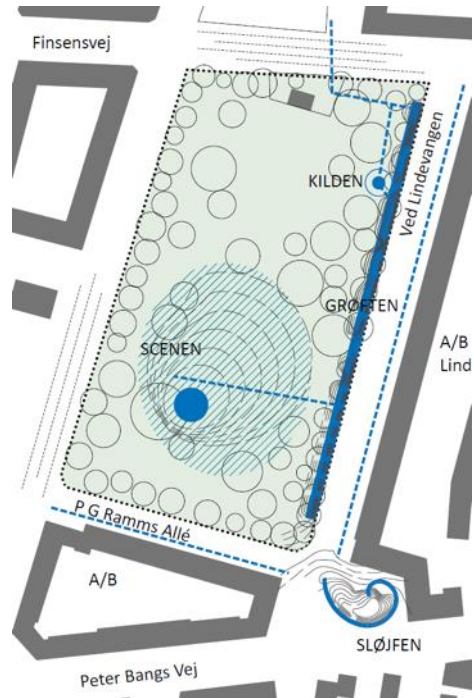


Photo: Carsten Ingemann

Lindevangsparken



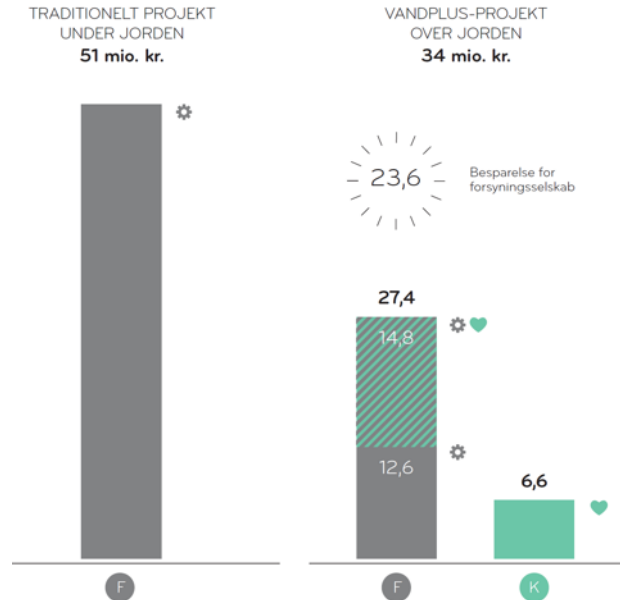
Photo: Carsten Ingemann



Lindevangsparken



Photo: Carsten Ingemann



Urbanisation



- People moving to cities
- Pressure on sports facilities
- Lack of space
- Where to build public spaces and recreational sports facilities?

Active Roof Top in Copenhagen



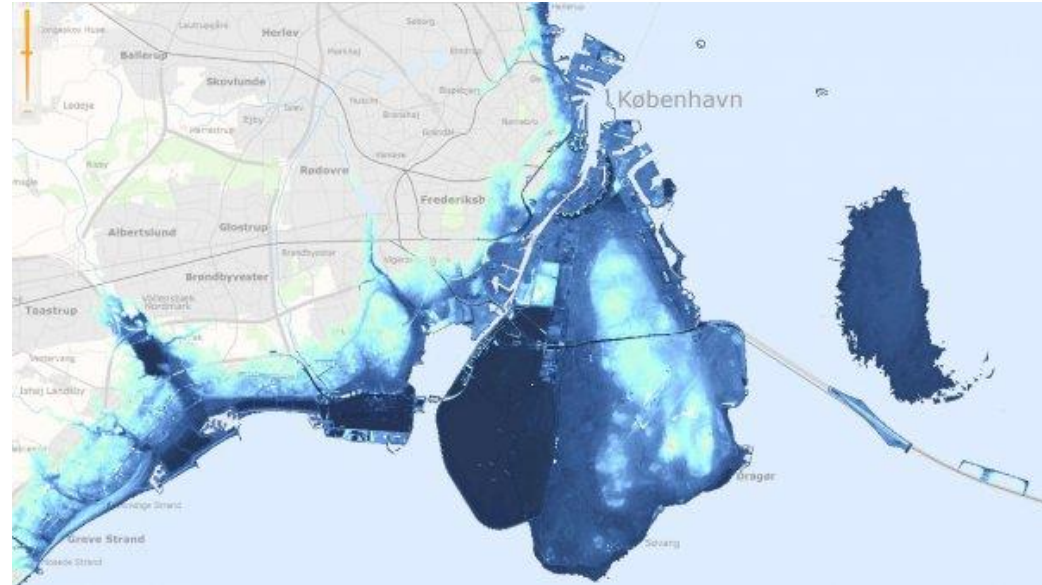
Active Roof Top in Copenhagen



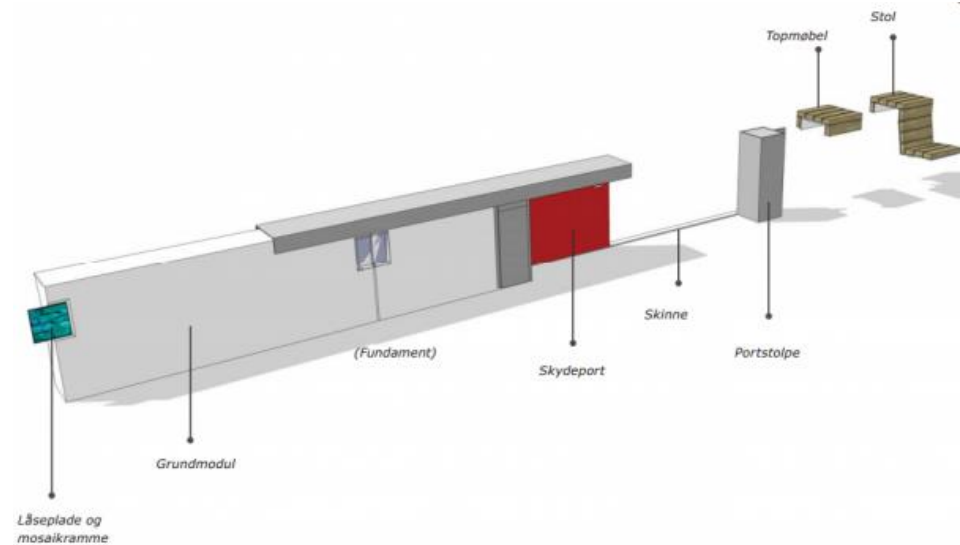
Active Roof Top in Copenhagen



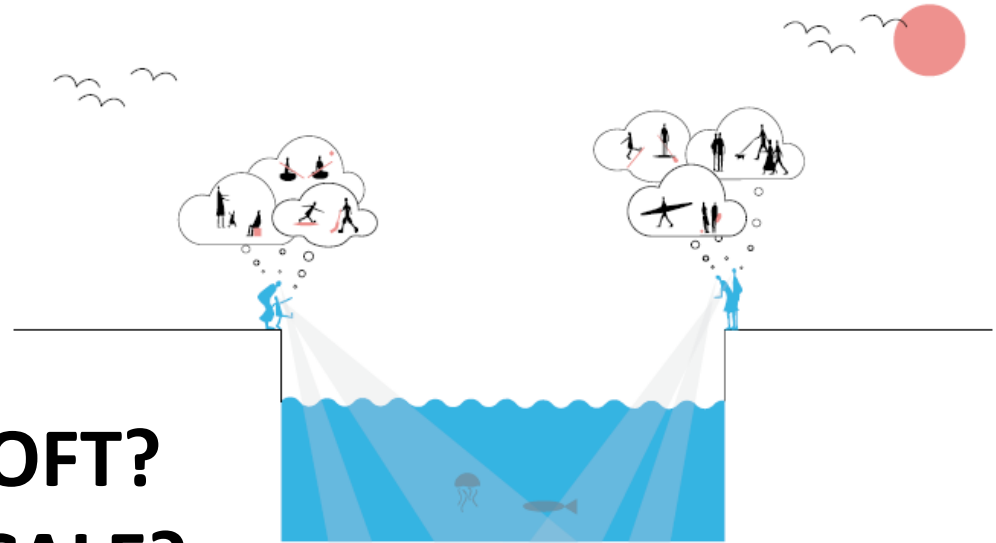
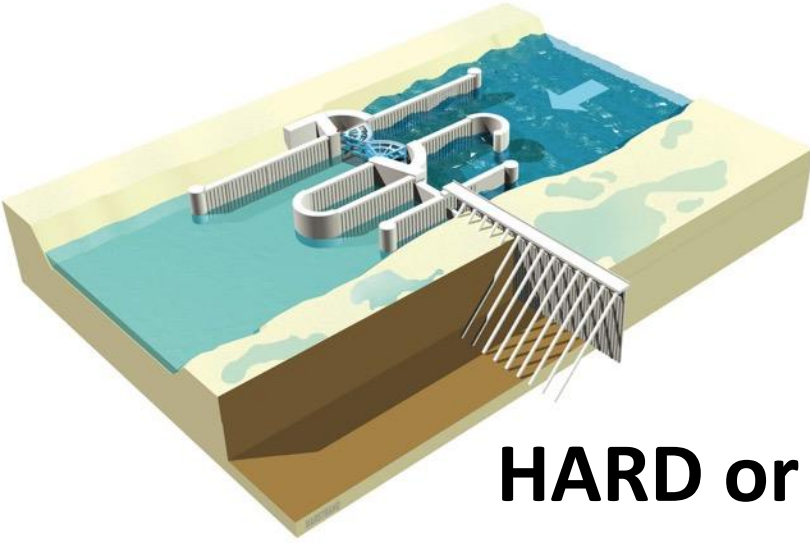
Rising sea levels and storm water



Lemvig Storm Water Wall



Future Storm Water projects



HARD or SOFT?
HUMAN SCALE?
RECREATION AND SPORT?

Protect drinking water AND create arena for outdoor sports



INNOVATION leading to new solutions

- **Double / tripple functionality**
- **Challenges + human scale
= new solutions**
- **Knowledge+experience+values**
- **Bring architects together with
end-users and movement
experts**
- **Good luck!**

THANK YOU!



www.loa-fonden.dk

Please contact us at...

Jakob Færch

Phone: +45 28 69 47 74

jf@loa-fonden.dk

LOKALE
ANLÆGS
FONDEN